

# SANSUI SR626

DIRECT-DRIVE ELECTRONIC TRANSCRIPTION TURNTABLE



Sansui engineers knew they were on the trail of a significant breakthrough in turntable excellence as the prototype of the SR-626 slowly took shape in our development laboratories. And they were right.

Its silent direct-drive system is built around a 20-pole, 30-slot brushless DC servomotor with a saturable core. A new rotor-position sensor mechanism keeps this super-quiet power system at precision

speed at all times

The advanced motor design, a mirror-finished spindle and sleeve combination and Sansui's attention to the smallest of details have lowered wow and flutter to a negligible 0.03% and boosted the signal-to-noise ratio to a high 64dB.

A special knife-edge support system ensures the lowest friction tonearm performance ever seen. The Sansui S-shaped arm is filled with a new reso-

nance-absorbing material (Pat. Pend.) to effectively damp all harmful resonance

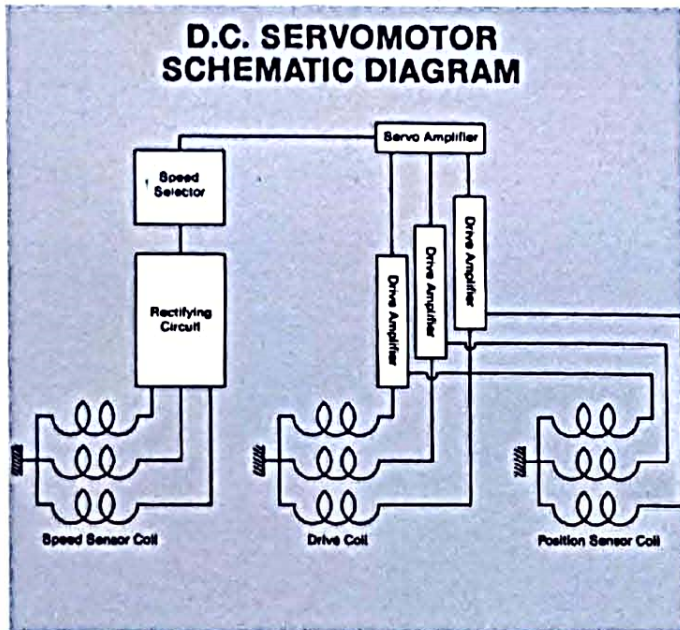
Finally, the SR-626 has features like the solid, die-cast aluminum headshell, stroboscopic pitch controls, electronic speed-change controls and many others to guarantee its performance excellence and ease of operation. From Sansui, where it's *all* hi-fi.

# Exceptional -72dB Rumble, 0.03% Wow and Flutter

## SUPER-QUIET POWER DRIVE

### 20-Pole Brushless DC Servomotor

Sansui has dared to redesign the direct-drive power unit in the SR-626 to deliver still more dazzling performance accuracy than the run-of-the-mill direct-drives and still keep the price competitive with belt-drive models. Speed drift is effectively eliminated with the use of a Sansui-exclusive rotor-position sensor mechanism coupled with the bias-controlled saturable core (Sansui Pat. Pend.) in the newly-developed 20-pole, 30-slot brushless DC servomotor. A transistorized differential servoamplifier assures that the high-torque motor achieves constant rotation in either speed (33 $\frac{1}{3}$  or 45 rpm) regardless of changes in tracking force or line voltage fluctuations. Wow and flutter is less than 0.03% WRMS, and rumble is below -72dB.



### Precision-Finished Spindle & Bearing

A superhard SUJ-2 material used for the center spindle is specially sintered and micron-finished to form a tight but nearly frictionless bearing seal with the mirror-finished sleeve. This precision construction complements the accuracy of the direct-drive mechanism to deliver an outstandingly high signal-to-noise ratio of 64dB regardless of changes in temperature and ensures the non-deterioration of original performance quality.

### Strobo-Assisted Fine Speed Adjustment

The outer rim of the platter on the SR-626 is engraved with dot-like stroboscopic calibrations. If when illuminated with the pulsing light of the built-in strob lamp they appear to "creep" forward or backward, adjust the speed ( $\pm 3.5\%$ ) of the platter with the Pitch Controls.

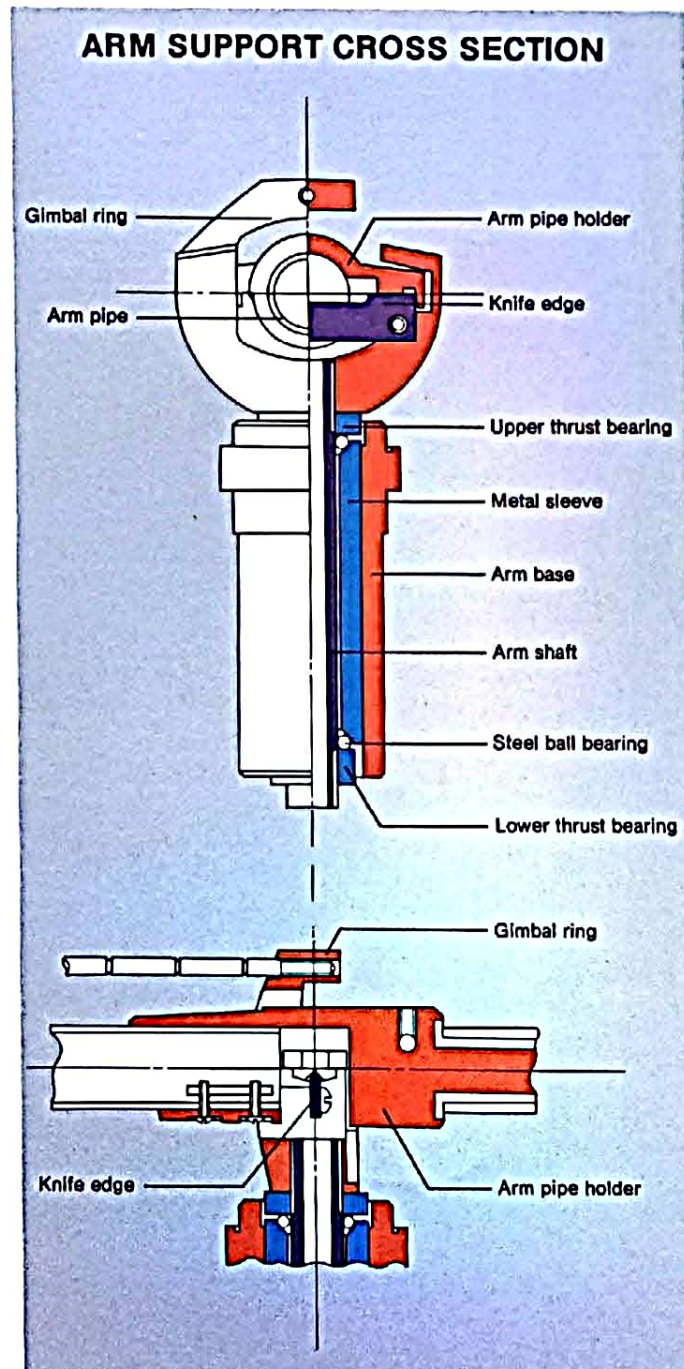
## HIGH-SENSITIVITY TONEARM

### Specially-Damped S-Shaped Tonearm

The S-shape design of the tonearm adds to the graceful good looks of the SR-626 and provides the ideal tracking angle. Inside the strong, chrome-finished pipe arm is a newly-developed absorbent (Sansui Pat. Pend.) which effectively eliminates all tonearm and counterweight resonance.

### Knife-Edge Tonearm Support

Friction, a major deterrent to proper tonearm performance, is practically nil for the SR-626's tonearm. In the vertical plane, as little pressure as 20 milligrams will cause the tonearm to lower 10 millimeters—a very sensitive ratio. This is due to its sharp, long-wearing knife-edge support. In the horizontal plane, tonearm movement is equally free of friction as it pivots on its ball-bearing races. These quality systems assure that the tonearm retains its original sensitivity for years.



### Other Tonearm Features

A one-piece headshell and finger of die-cast aluminum reduces resonance and adds strength. And of course the tonearm has gold-plated connection terminals to avoid electrical deterioration. The die-cast arm base and the newly-designed arm rest are further touches of quality, and the fact that the height of the tonearm is freely adjustable means you may use almost any cartridge you wish whatever its size. Low-capacitance output cables are provided so that you may add a CD-4 cartridge.

## SOLID SLIM-LINE CABINET

### Anti-Howl Cabinet

The solid mass and high internal loss of the 40mm thick laminate wood tonearm base means an end to cabinet resonance ("howling") and the elimination of image blurring, especially in the lower frequencies. Its specially-shaped motor cavity is carved and smoothed with precision.

### Natural Rubber Insulators and Acrylic Cover

External vibration will never cause mistracking or other problems in the performance of the SR-626. The large, natural rubber insulators (feet) on the solid cabinet base absorb such potential hazards before they can reach the tonearm and cartridge. For further convenience, the removable acrylic cover has a free-stop hinge design and a good looking, slim-silhouette shape to avoid resonance.

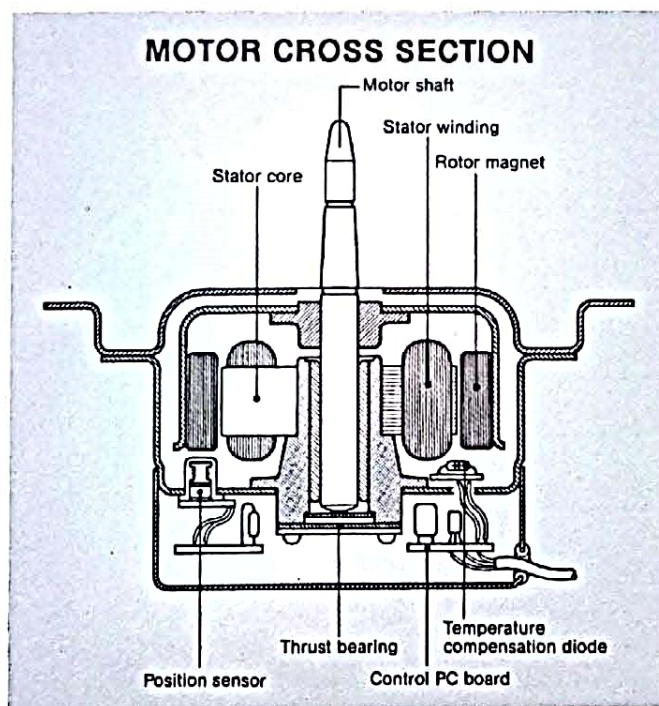
### Simple Control Layout

There are no unnecessary or complicated knobs and switches on the SR-626. Every control is designed to operate with maximum ease and is arranged on the cabinet base to afford maximum utility. The feeling and functionality of the Sansui SR-626 will never become obsolete.



### High-Performance MM Cartridge

Sansui has selected a special MM (moving magnet) cartridge to complement the specific performance abilities of the direct-drive power system, platter characteristics and tonearm design of the SR-626. It features low moving mass and an astonishing tracing ability and chances are that it will become one of your favorite cartridges for the reproduction of any and all stereo and matrix 4-channel records.

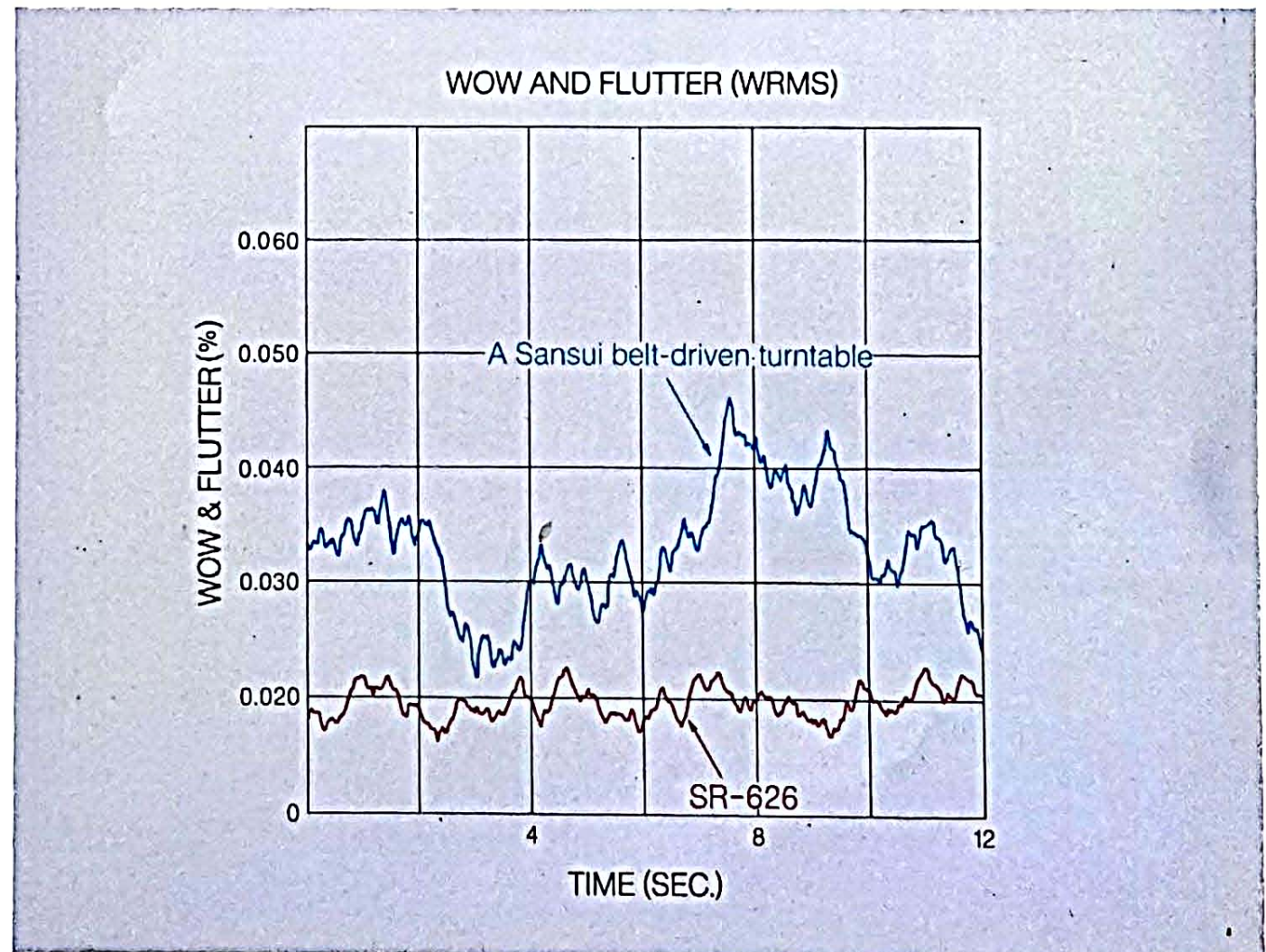
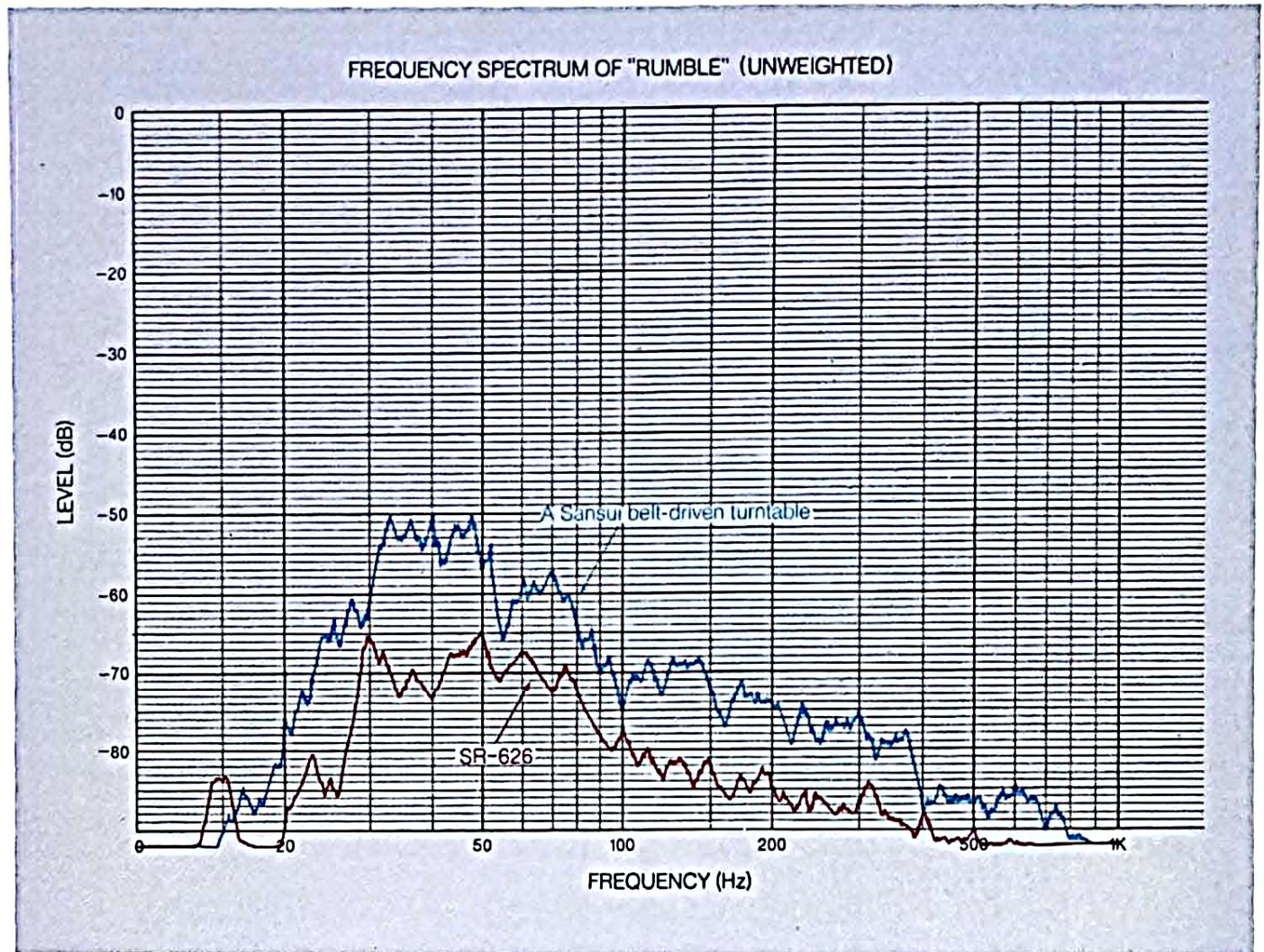


- ① SPEED SELECTOR (33⅓ and 45rpm)
- ② PITCH CONTROLS
- ③ STROBO LAMP
- ④ STROBO CALIBRATIONS
- ⑤ CENTER SPINDLE/MOTOR SHAFT
- ⑥ PLATTER
- ⑦ RESONANCE-FREE CABINET
- ⑧ RESONANCE-FREE HEAD SHELL/MM CARTRIDGE
- ⑨ S-SHAPED TUBULAR ARM
- ⑩ ARM LIFTER LEVER
- ⑪ ARM LIFTER BAR
- ⑫ SKATING-FORCE CANCELLER
- ⑬ LATERAL BALANCER
- ⑭ KNIFE-EDGE SUPPORT
- ⑮ DIRECT READOUT BALANCE WEIGHT
- ⑯ DETACHABLE FREE-STOP HINGE

## SPECIFICATIONS

<b>TYPE</b>	Manual single record playing transcription turntable
<b>MOTOR</b>	20-pole, 30-slot DC brushless type
<b>DRIVE</b>	Direct spindle drive, electronically servo-controlled
<b>PLATTER</b>	310mm (12¼") aluminum die-cast weighing 1.4 kg (3.1 lbs)
<b>PERFORMANCE</b>	
<b>WOW &amp; FLUTTER</b>	less than 0.03% (WRMS)
<b>SIGNAL TO NOISE RATIO</b>	better than 64dB (IEC-B) better than -72dB (DIN-B)
<b>RUMBLE</b>	better than -72dB (DIN-B)
<b>RECORD SPEEDS</b>	33⅓, 45 rpm
<b>FINE SPEED ADJUSTMENT</b>	±3.5% (separate knobs 33⅓ and 45 rpm)
<b>SPEED CONTROL</b>	Illuminated stroboscope with markings on the platter periphery
<b>TO NEARM</b>	Statically-balanced S-shaped resonance-free tonearm with knife-edge support, height adjustable
<b>LENGTH OVERHANG</b>	220mm (8⅞") pivot to stylus tip
<b>FRICITION</b> (10mm deflection)	17.5mm (¾")
<b>MINIMUM TRACKING FORCE</b>	20 milligrams vertical, 100 milligrams horizontal
<b>SETTING</b>	0.5 grams
<b>ACCEPTABLE CARTRIDGE WEIGHT</b>	4 to 11 grams
<b>COMPENSATION</b>	Bias & Lateral Balance
<b>CUEING</b>	Separate lever at arm base
<b>CARTRIDGE</b>	SV-27A
<b>TYPE</b>	Moving magnet
<b>FREQUENCY RESPONSE</b>	10 to 23,000Hz
<b>CHANNEL SEPARATION</b>	25dB (1,000Hz)
<b>OUTPUT VOLTAGE</b>	3.5mV per channel (1,000Hz 50mm/sec.)
<b>OPTIMUM LOAD</b>	47,000 ohms
<b>TRACKING FORCE</b>	1.5 to 2.0 grams
<b>STYLUS</b>	SN-27 0.5mil diamond spherical
<b>CABINERY</b>	40mm-thick chip-board base with anti-howling insulators and hinged free-stop tinted cover
<b>POWER REQUIREMENTS</b>	100V, 120V, 220V, 240V, 50/60Hz
<b>POWER CONSUMPTION</b>	5 watts (rated)
<b>DIMENSIONS</b>	469mm (18½") W 150mm (5⅞") H 375mm (14⅞") D
<b>WEIGHT</b>	9.5kg (20.9lbs) Net 11.2kg (24.6lbs) Packed
<b>ACCESSORIES</b>	45 rpm record spindle adaptor, Low capacitance (40pF/m) output signal cable, Cartridge mounting gauge

Design and specifications subject to change without notice for improvements.



SANSUI ELECTRIC CO., LTD. 14-1, 2-CHOME, IZUMI, SUGINAMI-KU, TOKYO 168, JAPAN/TELEPHONE: 323-1111/TELEX: 232-2076  
SANSUI ELECTRONICS CORPORATION 55-11 QUEENS BLVD. WOODSIDE, NEW YORK 11377, U.S.A./TELEX: NEW YORK 422633 SEC UI  
SANSUI AUDIO EUROPE S.A. DIACEM BUILDING, BESTINGSTRAAT 53-55, 2000 ANTWERP, BELGIUM/TELEX: ANTWERP 33538

**Sansui**

Printed in Japan 59002P